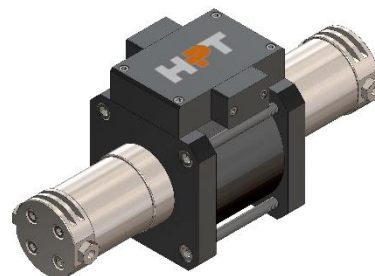


FEATURES

MODEL	HB100049SD14200				
TYPE	Gas Booster - Double Acting				
	Single Stage - Single Drive				
RATING	10,000	psi	-	689	Bar
MAX OUTLET PRESSURE (pB)	10,000	psi	-	689	Bar
TRANSMISSION RATIO (i)	1:49				



TECHNICAL

COMPRESSION RATIO	1:15				
DISPLACEMENT CYCLE	2.30	in ³	-	37.7	cm ³
MAX PUMPING SPEED	100	cpm			
MAX OP. TEMPERATURE	212	°F	-	100	°C

PERFORMANCES

MAX DRIVE PRESSURE (pL)	145	psi	-	10	Bar	
AIR CONSUPTION	32.6	scfm	-	924	NI/min	(pL 145 psi - 10 Bar, 50 cpm)
OUTLET FLOW	6.6	scfm	-	188	NI/min	(pA 1450 psi - 100 Bar, 50 cpm)
MIN INLET PRESSURE (pA)	2,893	psi	-	199	Bar	(to reach pB)
MAX INLET PRESSURE (pA)	10,000	psi	-	689	Bar	
STALL PRESSURE	i * pL + pA					

CONNECTIONS

GAS INLET	1/4" BSPP (F)	DRIVE RELIEF VALVE	1/4" BSPP (F)
GAS OUTLET	1/4" BSPP (F)	EXT. PILOT SUPPLY	1/8" BSPP (F)
DRIVE INLET	3/8" BSPP (F)	PULSE COUNTER	1/8" BSPP (F)

INFORMATIONS

LENGHT	17.5	in	-	445	mm	(approx.)
WIDTH	6.3	in	-	160	mm	(approx.)
HEIGHT	7.9	in	-	200	mm	(approx.)
NET WEIGHT	38.6	lb	-	17.5	Kg	(approx.)

ALL PICTURES SHOWN ARE FOR ILLUSTRATION PURPOSE ONLY. ACTUAL PRODUCT MAY VARY DUE TO PRODUCT ENHANCEMENT.