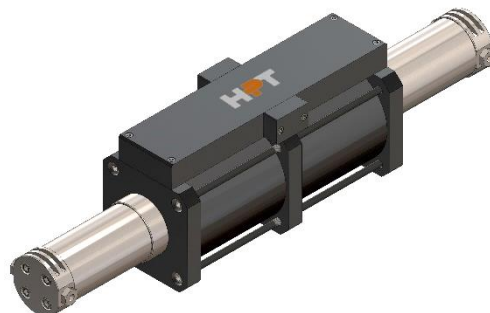


## FEATURES

<b>MODEL</b>	HB060025SD24300				
<b>TYPE</b>	Gas Booster - Double Acting				
	Single Stage - Double Drive				
<b>RATING</b>	6,000	psi	-	414	Bar
<b>MAX OUTLET PRESSURE (pB)</b>	6,000	psi	-	414	Bar
<b>TRANSMISSION RATIO (i)</b>	1:25				

## TECHNICAL

<b>COMPRESSION RATIO</b>	1:15				
<b>DISPLACEMENT CYCLE</b>	18.40	in <sup>3</sup>	-	301.6	cm <sup>3</sup>
<b>MAX PUMPING SPEED</b>	100	cpm			
<b>MAX OP. TEMPERATURE</b>	212	°F	-	100	°C



## PERFORMANCES

<b>MAX DRIVE PRESSURE (pL)</b>	145	psi	-	10	Bar	
<b>AIR CONSUPTION</b>	65.2	scfm	-	1,847	NI/min	(pL 145 psi - 10 Bar, 50 cpm)
<b>OUTLET FLOW</b>	53.3	scfm	-	1,508	NI/min	(pA 1450 psi - 100 Bar, 50 cpm)
<b>MIN INLET PRESSURE (pA)</b>	163	psi	-	11	Bar	(to reach pB)
<b>MAX INLET PRESSURE (pA)</b>	6,000	psi	-	414	Bar	
<b>STALL PRESSURE</b>	i * pL + pA					

## CONNECTIONS

<b>GAS INLET</b>	1/4" BSPP (F)	<b>DRIVE RELIEF VALVE</b>	1/4" BSPP (F)
<b>GAS OUTLET</b>	1/4" BSPP (F)	<b>EXT. PILOT SUPPLY</b>	1/8" BSPP (F)
<b>DRIVE INLET</b>	1/2" BSPP (F)	<b>PULSE COUNTER</b>	1/8" BSPP (F)

## INFORMATIONS

<b>LENGHT</b>	32.1	in	-	815	mm	(approx.)
<b>WIDTH</b>	6.3	in	-	160	mm	(approx.)
<b>HEIGHT</b>	7.9	in	-	200	mm	(approx.)
<b>NET WEIGHT</b>	56.8	lb	-	25.75	Kg	(approx.)

ALL PICTURES SHOWN ARE FOR ILLUSTRATION PURPOSE ONLY. ACTUAL PRODUCT MAY VARY DUE TO PRODUCT ENHANCEMENT.