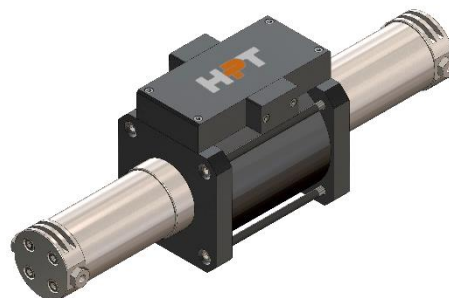


FEATURES

MODEL	HB060025SD13300				
TYPE	Gas Booster - Double Acting				
	Single Stage - Single Drive				
RATING	6,000	psi	-	414	Bar
MAX OUTLET PRESSURE (pB)	6,000	psi	-	414	Bar
TRANSMISSION RATIO (i)	1:25				

TECHNICAL

COMPRESSION RATIO	1:15				
DISPLACEMENT CYCLE	7.19	in ³	-	117.8	cm ³
MAX PUMPING SPEED	100	cpm			
MAX OP. TEMPERATURE	212	°F	-	100	°C



PERFORMANCES

MAX DRIVE PRESSURE (pL)	145	psi	-	10	Bar	
AIR CONSUPTION	52.0	scfm	-	1,473	NI/min	(pL 145 psi - 10 Bar, 50 cpm)
OUTLET FLOW	20.8	scfm	-	589	NI/min	(pA 1450 psi - 100 Bar, 50 cpm)
MIN INLET PRESSURE (pA)	2,374	psi	-	164	Bar	(to reach pB)
MAX INLET PRESSURE (pA)	6,000	psi	-	414	Bar	
STALL PRESSURE	i * pL + pA					

CONNECTIONS

GAS INLET	1/4" BSPP (F)	DRIVE RELIEF VALVE	1/4" BSPP (F)
GAS OUTLET	1/4" BSPP (F)	EXT. PILOT SUPPLY	1/8" BSPP (F)
DRIVE INLET	3/8" BSPP (F)	PULSE COUNTER	1/8" BSPP (F)

INFORMATIONS

LENGHT	24.6	in	-	625	mm	(approx.)
WIDTH	5.5	in	-	140	mm	(approx.)
HEIGHT	7.1	in	-	180	mm	(approx.)
NET WEIGHT	33.1	lb	-	15	Kg	(approx.)

ALL PICTURES SHOWN ARE FOR ILLUSTRATION PURPOSE ONLY. ACTUAL PRODUCT MAY VARY DUE TO PRODUCT ENHANCEMENT.